

DILLON

Strain gauge loadcells



DILLON STRAIN GAUGE LOADCELLS – THE RIGHT CAPACITY WITH EASY INSTALLATION

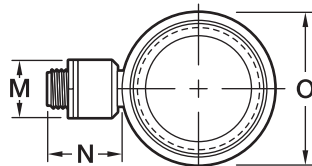
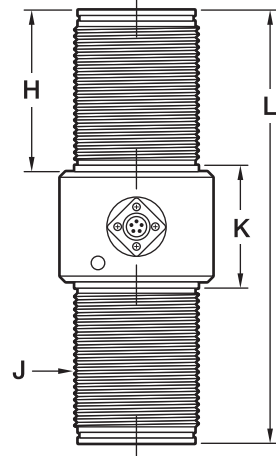
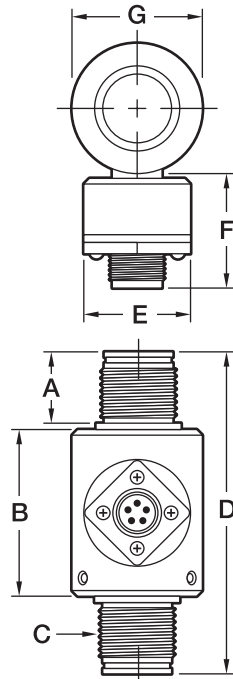
The lighter capacity Model Z cells can be fitted for either tension or compression measurement. They have capacities from 25 pounds to 1,000 pounds with kg equivalents. They include an Ampnenol 14-S side mount connector for easy installation.

The SGMT (tension) and SGMC (compression) loadcells come in pound capacities from 2,000 to 100,000 pounds and in kg capacities from 1000 to 40,000 kg. SGMT and SGMC load cells have up to 300% overload capacity without zero shift and 2 millivolts per volt full scale sensitivity.

Dillon Strain Gauge Load Cells are simple to install. Dillon offers the right mounting hardware for every application.

MODEL SGMT – TENSION CELLS

Model SGMT
2000–10000 lb. range



Model SGMT
20000–100000 lb.
range

Capacity	Part No.	A in (cm)	B in (cm)	C** in	D in (cm)	E in (cm)	F in (cm)	G in (cm)	Approx. Net Wt. lb (kg)
2000 lb.	31909-0064	1 ¹ / ₈ (2.86)	2 ⁵ / ₈ (6.67)	1 ³ / ₁₆ -12	4 ⁷ / ₈ (12.38)	1 ¹ / ₂ (3.81)	1 ³ / ₄ (4.45)	1 ³¹ / ₃₂ (5.00)	2.0 (.91)
5000 lb.	31909-0155	1 ¹ / ₈ (2.86)	2 ⁵ / ₈ (6.67)	1 ³ / ₁₆ -12	4 ⁷ / ₈ (12.38)	1 ¹ / ₂ (3.81)	1 ³ / ₄ (4.45)	1 ³¹ / ₃₂ (5.00)	2.0 (.91)
10000 lb.	31910-0038	1 ¹ / ₈ (2.86)	2 ⁵ / ₈ (6.67)	1 ³ / ₁₆ -12	4 ⁷ / ₈ (12.38)	1 ¹ / ₂ (3.81)	1 ³ / ₄ (4.45)	1 ³¹ / ₃₂ (5.00)	2.0 (.91)
12000 lb.	31910-0046	1 ¹ / ₈ (2.86)	2 ⁵ / ₈ (6.67)	1 ³ / ₁₆ -12	4 ⁷ / ₈ (12.38)	1 ¹ / ₂ (3.81)	1 ³ / ₄ (4.45)	1 ³¹ / ₃₂ (5.00)	2.0 (.91)

Capacity	Part No.	A in (cm)	B in (cm)	C** in	D in (cm)	E in (cm)	F in (cm)	G in (cm)	Approx. Net Wt. lb (kg)
1000 kg	31909-0056	1 ¹ / ₈ (2.86)	2 ⁵ / ₈ (6.67)	1 ³ / ₁₆ -12	4 ⁷ / ₈ (12.38)	1 ¹ / ₂ (3.81)	1 ³ / ₄ (4.45)	1 ³¹ / ₃₂ (5.00)	2.0 (.91)
2000 kg	31909-0114	1 ¹ / ₈ (2.86)	2 ⁵ / ₈ (6.67)	1 ³ / ₁₆ -12	4 ⁷ / ₈ (12.38)	1 ¹ / ₂ (3.81)	1 ³ / ₄ (4.45)	1 ³¹ / ₃₂ (5.00)	2.0 (.91)
3000 kg	31909-0189	1 ¹ / ₈ (2.86)	2 ⁵ / ₈ (6.67)	1 ³ / ₁₆ -12	4 ⁷ / ₈ (12.38)	1 ¹ / ₂ (3.81)	1 ³ / ₄ (4.45)	1 ³¹ / ₃₂ (5.00)	2.0 (.91)
4000 kg	31909-0247	1 ¹ / ₈ (2.86)	2 ⁵ / ₈ (6.67)	1 ³ / ₁₆ -12	4 ⁷ / ₈ (12.38)	1 ¹ / ₂ (3.81)	1 ³ / ₄ (4.45)	1 ³¹ / ₃₂ (5.00)	2.0 (.91)
5000 kg	31910-0020	1 ¹ / ₈ (2.86)	2 ⁵ / ₈ (6.67)	1 ³ / ₁₆ -12	4 ⁷ / ₈ (12.38)	1 ¹ / ₂ (3.81)	1 ³ / ₄ (4.45)	1 ³¹ / ₃₂ (5.00)	2.0 (.91)

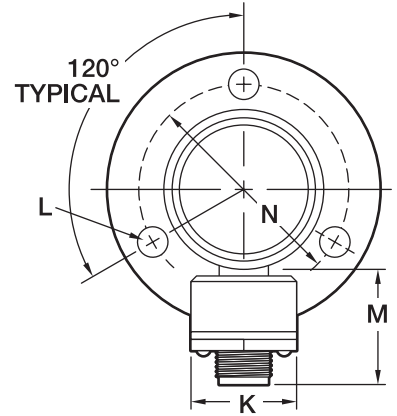
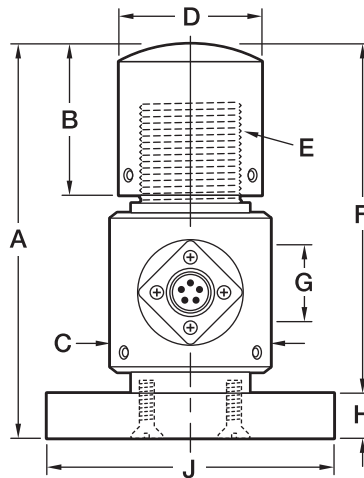
** Threads listed under column "C" are class 3A.

Capacity	Part No.	H in (cm)	J* in	K in (cm)	L in (cm)	M in (cm)	N in (cm)	O in (cm)	Approx. Net Wt. lb (kg)
20000 lb.	31911-0045	1 ¹³ / ₁₆ (4.60)	1 ¹ / ₂ -12	2 ⁵ / ₈ (6.67)	6 ¹ / ₄ (15.88)	1 ¹ / ₂ (3.81)	1 ³ / ₄ (4.45)	2 ⁷ / ₃₂ (5.64)	2.5 (1.14)
50000 lb.	31912-0036	2 ¹⁷ / ₃₂ (6.43)	2 ¹ / ₄ -12	2 ²⁷ / ₃₂ (7.22)	7 ²⁹ / ₃₂ (20.08)	1 ¹ / ₂ (3.81)	1 ³ / ₄ (4.45)	3 (7.62)	5.5 (2.5)
100000 lb.	31912-0085	2 ¹⁷ / ₃₂ (6.43)	2 ¹ / ₄ -12	2 ²⁷ / ₃₂ (7.22)	7 ²⁹ / ₃₂ (20.08)	1 ¹ / ₂ (3.81)	1 ³ / ₄ (4.45)	3 (7.62)	10.0 (4.54)

Capacity	Part No.	H in (cm)	J* in	K in (cm)	L in (cm)	M in (cm)	N in (cm)	O in (cm)	Approx. Net Wt. lb (kg)
10000 kg	31911-0037	1 ¹³ / ₁₆ (4.60)	1 ¹ / ₂ -12	2 ⁵ / ₈ (6.67)	6 ¹ / ₄ (15.88)	1 ¹ / ₂ (3.81)	1 ³ / ₄ (4.45)	2 ⁷ / ₃₂ (5.64)	2.5 (1.14)
15000 kg	31911-0052	1 ¹³ / ₁₆ (4.60)	1 ¹ / ₂ -12	2 ⁵ / ₈ (6.67)	6 ¹ / ₄ (15.88)	1 ¹ / ₂ (3.81)	1 ³ / ₄ (4.45)	2 ⁷ / ₃₂ (5.64)	2.5 (1.14)
20000 kg	31912-0010	2 ¹⁷ / ₃₂ (6.43)	2 ¹ / ₄ -12	2 ²⁷ / ₃₂ (7.22)	7 ²⁹ / ₃₂ (20.08)	1 ¹ / ₂ (3.81)	1 ³ / ₄ (4.45)	3 (7.62)	5.5 (2.5)
30000 kg	31912-0044	2 ¹⁷ / ₃₂ (6.43)	2 ¹ / ₄ -12	2 ²⁷ / ₃₂ (7.22)	7 ²⁹ / ₃₂ (20.08)	1 ¹ / ₂ (3.81)	1 ³ / ₄ (4.45)	3 (7.62)	5.5 (2.5)
40000 kg	31912-0069	2 ¹⁷ / ₃₂ (6.43)	2 ¹ / ₄ -12	2 ²⁷ / ₃₂ (7.22)	7 ²⁹ / ₃₂ (20.08)	1 ¹ / ₂ (3.81)	1 ³ / ₄ (4.45)	3 (7.62)	10.0 (4.54)

* Threads listed under column "J" are class 2A.

MODEL SGMC COMPRESSION CELLS



Base plate and compression cap are included in the price of compression cells.

Capacity	Part No.	A in (cm)	B in (cm)	C in (cm)	D in (cm)	E* in	F in (cm)	G in (cm)	H in (cm)	J in (cm)	K in (cm)	L in (cm)	M in (cm)	N in (cm)	Approx. Net Wt. lb (kg)
2000 lb	31913-0068	4 ²⁹ / ₃₂ (12.46)	1 ²⁵ / ₃₂ (4.52)	1 ³¹ / ₃₂ (5.00)	1 ⁵ / ₈ (4.13)	1 ³ / ₁₆ -12	4 ³ / ₈ (11.11)	1 ¹ / ₂ (3.81)	1/2 (1.27)	3 ⁷ / ₈ (9.84)	1 ¹ / ₂ (3.81)	1 ³ / ₃₂ (1.03)	1 ³ / ₄ (4.45)	3 ¹ / ₁₆ (7.78)	3.5 (1.59)
5000 lb	31913-0159	4 ²⁹ / ₃₂ (12.46)	1 ²⁵ / ₃₂ (4.52)	1 ³¹ / ₃₂ (5.00)	1 ⁵ / ₈ (4.13)	1 ³ / ₁₆ -12	4 ³ / ₈ (11.11)	1 ¹ / ₂ (3.81)	1/2 (1.27)	3 ⁷ / ₈ (9.84)	1 ¹ / ₂ (3.81)	1 ³ / ₃₂ (1.03)	1 ³ / ₄ (4.45)	3 ¹ / ₁₆ (7.78)	3.5 (1.59)
10000 lb	31914-0034	4 ²⁹ / ₃₂ (12.46)	1 ²⁵ / ₃₂ (4.52)	1 ³¹ / ₃₂ (5.00)	1 ⁵ / ₈ (4.13)	1 ³ / ₁₆ -12	4 ³ / ₈ (11.11)	1 ¹ / ₂ (3.81)	1/2 (1.27)	3 ⁷ / ₈ (9.84)	1 ¹ / ₂ (3.81)	1 ³ / ₃₂ (1.03)	1 ³ / ₄ (4.45)	3 ¹ / ₁₆ (7.78)	3.5 (1.59)
20000 lb	31915-0041	5 ⁷ / ₈ (14.92)	2 ¹ / ₂ (6.35)	2 ⁷ / ₃₂ (5.64)	1 ³¹ / ₃₂ (5.00)	1 ¹ / ₂ -12	5 ¹ / ₄ (13.34)	1 ¹ / ₂ (3.81)	5/8 (1.59)	4 (10.16)	1 ¹ / ₂ (3.81)	1 ³ / ₃₂ (1.03)	1 ³ / ₄ (4.45)	3 ¹ / ₈ (7.94)	5.5 (2.50)
50000 lb	31916-0032	7 ³ / ₈ (18.73)	3 ⁵ / ₈ (9.21)	3 (7.62)	2 ¹⁵ / ₁₆ (7.46)	2 ¹ / ₄ -12	6 ³ / ₄ (17.15)	1 ¹ / ₂ (3.81)	5/8 (1.59)	5 (12.70)	1 ¹ / ₂ (3.81)	1 ⁷ / ₃₂ (1.35)	1 ³ / ₄ (4.45)	4 (10.16)	12.0 (5.45)
100000 lb	31916-0081	7 ³ / ₈ (18.73)	3 ⁵ / ₈ (9.21)	3 (7.62)	2 ¹⁵ / ₁₆ (7.46)	2 ¹ / ₄ -12	6 ³ / ₄ (17.15)	1 ¹ / ₂ (3.81)	5/8 (1.59)	5 (12.70)	1 ¹ / ₂ (3.81)	1 ⁷ / ₃₂ (1.35)	1 ³ / ₄ (4.45)	4 (10.16)	15.0 (6.81)

Capacity	Part No.	A in (cm)	B in (cm)	C in (cm)	D in (cm)	E* in	F in (cm)	G in (cm)	H in (cm)	J in (cm)	K in (cm)	L in (cm)	M in (cm)	N in (cm)	Approx. Net Wt. lb (kg)
1000 kg	31913-0050	4 ²⁹ / ₃₂ (12.46)	1 ²⁵ / ₃₂ (4.52)	1 ³¹ / ₃₂ (5.00)	1 ⁵ / ₈ (4.13)	1 ³ / ₁₆ -12	4 ³ / ₈ (11.11)	1 ¹ / ₂ (3.81)	1/2 (1.27)	3 ⁷ / ₈ (9.84)	1 ¹ / ₂ (3.81)	1 ³ / ₃₂ (1.03)	1 ³ / ₄ (4.45)	3 ¹ / ₁₆ (7.78)	3.5 (1.59)
2000 kg	31913-0118	4 ²⁹ / ₃₂ (12.46)	1 ²⁵ / ₃₂ (4.52)	1 ³¹ / ₃₂ (5.00)	1 ⁵ / ₈ (4.13)	1 ³ / ₁₆ -12	4 ³ / ₈ (11.11)	1 ¹ / ₂ (3.81)	1/2 (1.27)	3 ⁷ / ₈ (9.84)	1 ¹ / ₂ (3.81)	1 ³ / ₃₂ (1.03)	1 ³ / ₄ (4.45)	3 ¹ / ₁₆ (7.78)	3.5 (1.59)
3000 kg	31913-0183	4 ²⁹ / ₃₂ (12.46)	1 ²⁵ / ₃₂ (4.52)	1 ³¹ / ₃₂ (5.00)	1 ⁵ / ₈ (4.13)	1 ³ / ₁₆ -12	4 ³ / ₈ (11.11)	1 ¹ / ₂ (3.81)	1/2 (1.27)	3 ⁷ / ₈ (9.84)	1 ¹ / ₂ (3.81)	1 ³ / ₃₂ (1.03)	1 ³ / ₄ (4.45)	3 ¹ / ₁₆ (7.78)	3.5 (1.59)
4000 kg	31913-0241	4 ²⁹ / ₃₂ (12.46)	1 ²⁵ / ₃₂ (4.52)	1 ³¹ / ₃₂ (5.00)	1 ⁵ / ₈ (4.13)	1 ³ / ₁₆ -12	4 ³ / ₈ (11.11)	1 ¹ / ₂ (3.81)	1/2 (1.27)	3 ⁷ / ₈ (9.84)	1 ¹ / ₂ (3.81)	1 ³ / ₃₂ (1.03)	1 ³ / ₄ (4.45)	3 ¹ / ₁₆ (7.78)	3.5 (1.59)
5000 kg	31914-0026	4 ²⁹ / ₃₂ (12.46)	1 ²⁵ / ₃₂ (4.52)	1 ³¹ / ₃₂ (5.00)	1 ⁵ / ₈ (4.13)	1 ³ / ₁₆ -12	5 ¹ / ₄ (13.34)	1 ¹ / ₂ (3.81)	1/2 (1.27)	3 ⁷ / ₈ (9.84)	1 ¹ / ₂ (3.81)	1 ³ / ₃₂ (1.03)	1 ³ / ₄ (4.45)	3 ¹ / ₁₆ (7.78)	3.5 (1.59)
10000 kg	31915-0033	5 ⁷ / ₈ (14.92)	2 ¹ / ₂ (6.35)	2 ⁷ / ₃₂ (5.64)	1 ³¹ / ₃₂ (5.00)	1 ¹ / ₂ -12	5 ¹ / ₄ (13.34)	1 ¹ / ₂ (3.81)	5/8 (1.59)	4 (10.16)	1 ¹ / ₂ (3.81)	1 ³ / ₃₂ (1.03)	1 ³ / ₄ (4.45)	3 ¹ / ₈ (7.94)	5.5 (2.50)
15000 kg	31915-0058	5 ⁷ / ₈ (14.92)	2 ¹ / ₂ (6.35)	2 ⁷ / ₃₂ (5.64)	1 ³¹ / ₃₂ (5.00)	1 ¹ / ₂ -12	6 ³ / ₄ (17.15)	1 ¹ / ₂ (3.81)	5/8 (1.59)	4 (10.16)	1 ¹ / ₂ (3.81)	1 ³ / ₃₂ (1.03)	1 ³ / ₄ (4.45)	3 ¹ / ₈ (7.94)	5.5 (2.50)
20000 kg	31916-0016	7 ³ / ₈ (18.73)	3 ⁵ / ₈ (9.21)	3 (7.62)	2 ¹⁵ / ₁₆ (7.46)	2 ¹ / ₄ -12	6 ³ / ₄ (17.15)	1 ¹ / ₂ (3.81)	5/8 (1.59)	5 (12.70)	1 ¹ / ₂ (3.81)	1 ⁷ / ₃₂ (1.35)	1 ³ / ₄ (4.45)	4 (10.16)	12.0 (5.45)
30000 kg	31916-0040	7 ³ / ₈ (18.73)	3 ⁵ / ₈ (9.21)	3 (7.62)	2 ¹⁵ / ₁₆ (7.46)	2 ¹ / ₄ -12	6 ³ / ₄ (17.15)	1 ¹ / ₂ (3.81)	5/8 (1.59)	5 (12.70)	1 ¹ / ₂ (3.81)	1 ⁷ / ₃₂ (1.35)	1 ³ / ₄ (4.45)	4 (10.16)	12.0 (5.45)
40000 kg	31916-0065	7 ³ / ₈ (18.73)	3 ⁵ / ₈ (9.21)	3 (7.62)	2 ¹⁵ / ₁₆ (7.46)	2 ¹ / ₄ -12	6 ³ / ₄ (17.15)	1 ¹ / ₂ (3.81)	5/8 (1.59)	5 (12.70)	1 ¹ / ₂ (3.81)	1 ⁷ / ₃₂ (1.35)	1 ³ / ₄ (4.45)	4 (10.16)	15.0 (6.81)

*Threads listed under column "E" are class 3A for capacities through 10,000 pounds or 5,000 kg. Capacities from 20,000 through 100,000 pounds (10,000 to 40,000 kg) have class 2A threads.

LOADCELL HARDWARE SELECTIONS

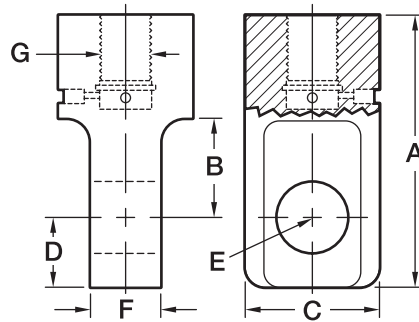
A broad line of loadcell hardware is available for simple installation in a large variety of loadcell applications.

for optimum performance and calibration traceability, this hardware is installed and calibrated with loadcells at the factory.



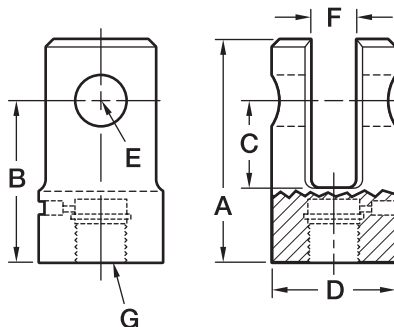
PULL PLUG

Cell Rating lb (kg)	Part No.	A in (cm)	B in (cm)	C in (cm)	D in (cm)	E in (cm)	F in (cm)	G in	Approx. Net Wt. lb (kg)
2000 (1000)	31417-0010	3 ¹ / ₂ (8.89)	1 ³ / ₈ (3.49)	1 ¹¹ / ₁₆ (4.29)	7/ ₈ (2.22)	49/ ₆₄ (1.94)	1 (2.54)	1 ³ / ₁₆ -12	1.2 (.54)
5000 (2000)	31417-0010	3 ¹ / ₂ (8.89)	1 ³ / ₈ (3.49)	1 ¹¹ / ₁₆ (4.29)	7/ ₈ (2.22)	49/ ₆₄ (1.94)	1 (2.54)	1 ³ / ₁₆ -12	1.2 (.54)
10000 (5000)	31417-0010	3 ¹ / ₂ (8.89)	1 ³ / ₈ (3.49)	1 ¹¹ / ₁₆ (4.29)	7/ ₈ (2.22)	49/ ₆₄ (1.94)	1 (2.54)	1 ³ / ₁₆ -12	1.2 (.54)
20000 (10000)	35171-0017	5 ⁹ / ₁₆ (14.13)	2 (5.08)	2 ¹¹ / ₁₆ (6.83)	1 ⁷ / ₁₆ (3.65)	1 ⁷ / ₁₆ (3.65)	1 ⁶¹ / ₆₄ (4.97)	1 ¹ / ₂ -12	9.4 (4.26)
50000 (20000)	35159-0013	7 ¹¹ / ₁₆ (19.53)	2 ¹¹ / ₁₆ (6.83)	3 ⁷ / ₈ (9.84)	2 ¹ / ₁₆ (5.24)	2 ¹ / ₁₆ (5.24)	2 ⁴⁷ / ₆₄ (6.95)	2 ¹ / ₄ -12	17.6 (7.98)
100000 (40000)	35158-0014	9 ⁷ / ₈ (25.08)	4 (10.16)	5 ³ / ₈ (13.65)	2 ¹³ / ₁₆ (7.14)	2 ¹³ / ₁₆ (7.14)	3 ²⁹ / ₃₂ (9.92)	2 ¹ / ₄ -12	45.3 (20.56)



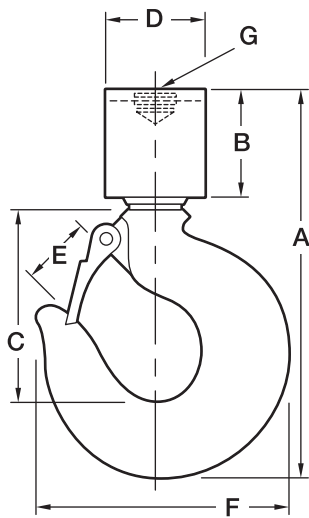
YOKE

Cell Rating lb (kg)	Part No.	A in (cm)	B in (cm)	C in (cm)	D in (cm)	E in (cm)	F in (cm)	G in	Approx. Net Wt. lb (kg)
2000 (1000)	33621-0018	3 ¹⁵ / ₁₆ (10.00)	2 ¹⁵ / ₁₆ (7.46)	1 ⁵ / ₈ (4.13)	2 ¹ / ₈ (5.40)	49/ ₆₄ (1.94)	1 ¹ / ₁₆ (2.70)	1 ³ / ₁₆ -12	1.9 (.86)
5000 (2000)	33621-0018	3 ¹⁵ / ₁₆ (10.00)	2 ¹⁵ / ₁₆ (7.46)	1 ⁻⁵ / ₈ (4.13)	2 ¹ / ₈ (5.40)	49/ ₆₄ (1.94)	1 ¹ / ₁₆ (2.70)	1 ³ / ₁₆ -12	1.9 (.86)
10000 (5000)	33621-0018	3 ¹⁵ / ₁₆ (10.00)	2 ¹⁵ / ₁₆ (7.46)	1 ⁵ / ₈ (4.13)	2 ¹ / ₈ (5.40)	49/ ₆₄ (1.94)	1 ¹ / ₁₆ (2.70)	1 ³ / ₁₆ -12	1.9 (.86)
20000 (10000)	35142-0013	6 (15.24)	4 ⁷ / ₁₆ (11.27)	2 (5.08)	3 ⁵ / ₈ (9.21)	1 ⁷ / ₁₆ (3.65)	2 (5.08)	1 ¹ / ₂ -12	9.2 (4.17)
50000 (20000)	30975-0016	8 ³ / ₃₂ (20.56)	5 ¹³ / ₁₆ (14.76)	2 ¹¹ / ₁₆ (6.83)	5 ¹ / ₄ (13.34)	2 ¹ / ₁₆ (5.24)	2 ²⁵ / ₃₂ (7.06)	2 ¹ / ₄ -12	24.2 (10.98)
100000 (40000)	30976-0015	10 ³ / ₄ (27.30)	7 ¹ / ₂ (19.05)	4 ¹ / ₈ (10.48)	7 ¹ / ₈ (18.10)	2 ¹³ / ₁₆ (7.14)	4 ¹ / ₃₂ (10.24)	2 ¹ / ₄ -12	59.7 (27.08)



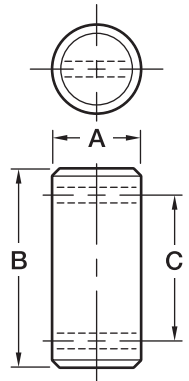
SWIVEL HOOK

Cell Rating lb (kg)	Part No.	A in (cm)	B in (cm)	C in (cm)	D in (cm)	E in (cm)	F in (cm)	G in	Approx. Net Wt. lb (kg)
2000 (1000)	30259-0013	8 ¹ / ₄ (20.96)	3 (5.54)	3 ³ / ₄ (9.52)	2 ¹ / ₂ (6.35)	1 ⁵ / ₁₆ (3.33)	4 ¹⁵ / ₁₆ (12.54)	1 ³ / ₁₆ -12	5.9 (2.68)
5000 (2000)	30259-0013	8 ¹ / ₄ (20.96)	3 (5.54)	3 ³ / ₄ (9.52)	2 ¹ / ₂ (6.35)	1 ⁵ / ₁₆ (3.33)	4 ¹⁵ / ₁₆ (12.54)	1 ³ / ₁₆ -12	5.9 (2.68)
2000 (1000)	30407-0014	10 ¹ / ₁₆ (25.56)	3 ⁷ / ₁₆ (8.73)	4 ³ / ₄ (6.99)	3 (7.62)	1 ¹¹ / ₁₆ (4.29)	5 ¹ / ₂ (13.97)	1 ³ / ₁₆ -12	10.7 (4.85)
5000 (2000)	30407-0014	10 ¹ / ₁₆ (25.56)	3 ⁷ / ₁₆ (8.73)	4 ³ / ₄ (6.99)	3 (7.62)	1 ¹¹ / ₁₆ (4.29)	5 ¹ / ₂ (13.97)	1 ³ / ₁₆ -12	10.7 (4.85)
10000 (5000)	30407-0014	10 ¹ / ₁₆ (25.56)	3 ⁷ / ₁₆ (8.73)	4 ³ / ₄ (6.99)	3 (7.62)	1 ¹¹ / ₁₆ (4.29)	5 ¹ / ₂ (13.97)	1 ³ / ₁₆ -12	10.7 (4.85)
20000 (10000)	30947-0011	13 ¹¹ / ₁₆ (34.77)	4 ⁵ / ₈ (11.75)	6 ⁷ / ₁₆ (16.35)	4 ¹ / ₄ (10.80)	2 ¹ / ₄ (5.72)	8 ¹¹ / ₁₆ (22.07)	1 ¹ / ₂ -12	29.1 (13.20)
50000 (20000)	30930-0010	20 ³ / ₈ (51.75)	7 ¹ / ₄ (18.42)	9 ⁷ / ₁₆ (23.97)	5 (12.70)	3 ⁵ / ₈ (9.21)	13 ⁵ / ₈ (34.61)	2 ¹ / ₂ -12	77.9 (35.34)



YOKE PIN

Cell Rating lb (kg)	Part No.	A in (cm)	B in (cm)	C in (cm)	Approx. Net Wt. lb (kg)
2000 (1000)	30974-0017	³ / ₄ (1.91)	3 ³ / ₁₆ (8.10)	2 ⁷ / ₁₆ (6.19)	.38 (.17)
5000 (2000)	30974-0017	³ / ₄ (1.91)	3 ³ / ₁₆ (8.10)	2 ⁷ / ₁₆ (6.19)	.38 (.17)
10000 (5000)	30974-0017	³ / ₄ (1.91)	3 ³ / ₁₆ (8.10)	2 ⁷ / ₁₆ (6.19)	.38 (.17)
20000 (10000)	30974-0025	1 ⁷ / ₁₆ (3.62)	4 ²¹ / ₃₂ (11.75)	3 ²⁹ / ₃₂ (9.92)	2.2 (1.00)
50000 (20000)	30974-0041	2 ¹ / ₁₆ (5.20)	6 ³ / ₈ (16.19)	5 ³ / ₈ (13.65)	6.0 (2.72)
100000 (40000)	30974-0066	2 ²³ / ₃₂ (6.91)	8 ⁹ / ₃₂ (21.03)	7 ¹⁷ / ₃₂ (19.13)	14.4 (6.53)



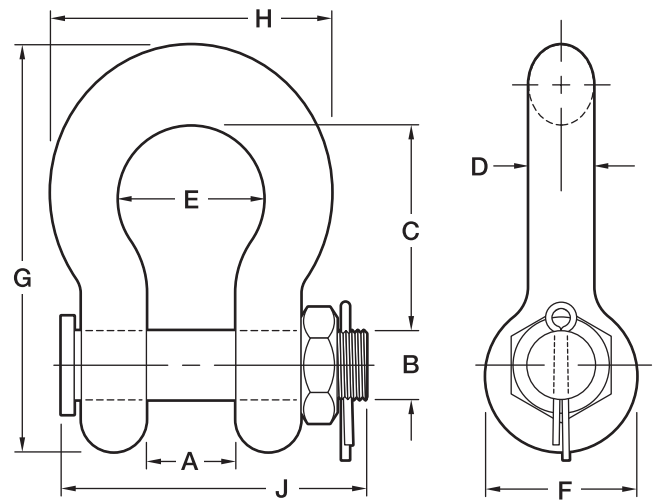
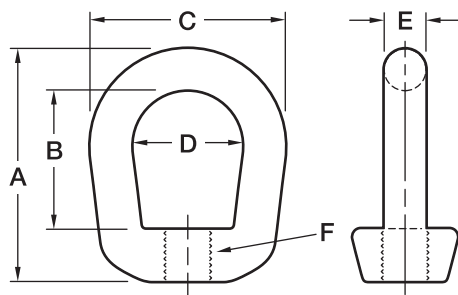
BOLT-TYPE ANCHOR SHACKLE

Requires Pull Plug attachment.

Cell Rating lb (kg)	Part No.	A in (cm)	B in (cm)	C in (cm)	D in (cm)	E in (cm)	F in (cm)	G in (cm)	H in (cm)	J in (cm)	Approx. Net Wt. lb (kg)
2000 (1000)	30010-0013	1 ¹ / ₁₆ (2.69)	³ / ₄ (1.91)	2 ³ / ₈ (5.97)	³ / ₄ (1.91)	1 ¹¹ / ₁₆ (4.29)	1 ³ / ₄ (4.45)	4 ³ / ₄ (12.07)	3 ³ / ₁₆ (8.10)	3 ²³ / ₃₂ (9.45)	2.25 (1.02)
5000 (2000)	30010-0013	1 ¹ / ₁₆ (2.69)	³ / ₄ (1.91)	2 ³ / ₈ (5.97)	³ / ₄ (1.91)	1 ¹¹ / ₁₆ (4.29)	1 ³ / ₄ (4.45)	4 ³ / ₄ (12.07)	3 ³ / ₁₆ (8.10)	3 ²³ / ₃₂ (9.45)	2.25 (1.02)
10000 (5000)	30010-0013	1 ¹ / ₁₆ (2.69)	³ / ₄ (1.91)	2 ³ / ₈ (5.97)	³ / ₄ (1.91)	1 ¹¹ / ₁₆ (4.29)	1 ³ / ₄ (4.45)	4 ³ / ₄ (12.07)	3 ³ / ₁₆ (8.10)	3 ²³ / ₃₂ (9.45)	2.25 (1.02)
20000 (10000)	26916-0016	2 ¹ / ₃₂ (5.16)	1 ³ / ₈ (3.51)	4 ¹¹ / ₁₆ (11.91)	1 ¹ / ₄ (3.18)	3 ¹ / ₄ (8.26)	3 (8.26)	8 ¹ / ₈ (20.65)	5 ³ / ₄ (14.61)	7 (17.78)	11.25 (5.10)
50000 (20000)	26916-0024	2 ⁷ / ₈ (7.32)	2 (5.08)	7 (17.78)	1 ³ / ₄ (4.45)	5 (12.70)	4 ⁹ / ₁₆ (11.58)	11 ⁷ / ₈ (30.18)	8 ¹ / ₂ (21.59)	9 ¹⁹ / ₃₂ (24.36)	31.20 (14.15)
100000 (40000)	26916-0032	4 ¹ / ₈ (10.46)	2 ³ / ₄ (6.99)	10 ¹ / ₂ (26.67)	2 ¹ / ₂ (6.35)	7 ¹ / ₄ (18.42)	6 (15.24)	17 ³ / ₄ (45.09)	12 ¹ / ₂ (31.75)	13 ¹¹ / ₁₆ (34.77)	94.00 (42.64)

EYE NUT

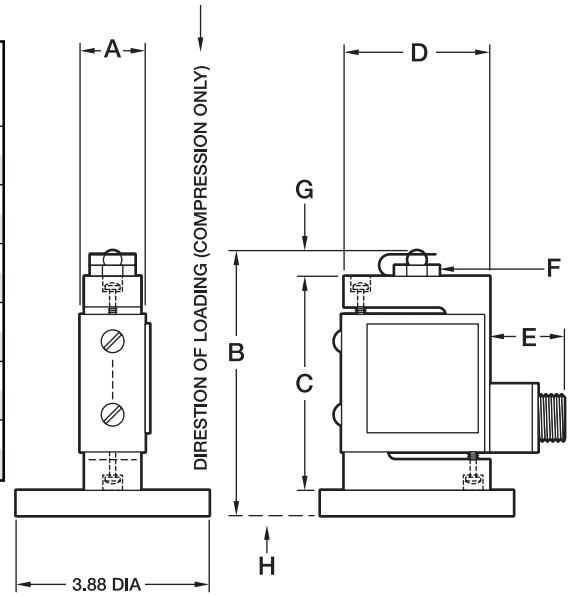
Cell Rating lb (kg)	Part No.	A in (cm)	B in (cm)	C in (cm)	D in (cm)	E in (cm)	F in	Approx. Net Wt. lb (kg)
2000 (1000)	30270-0018	5 (12.7)	3 ¹ / ₁₆ (7.78)	4 (10.16)	2 ¹ / ₄ (5.72)	⁷ / ₈ (2.22)	1 ³ / ₁₆ -12	2.5 (1.13)
5000 (2000)	30270-0018	5 (12.7)	3 ¹ / ₁₆ (7.78)	4 (10.16)	2 ¹ / ₄ (5.72)	⁷ / ₈ (2.22)	1 ³ / ₁₆ -12	2.5 (1.13)
10000 (5000)	30270-0018	5 (12.7)	3 ¹ / ₁₆ (7.78)	4 (10.16)	2 ¹ / ₄ (5.72)	⁷ / ₈ (2.22)	1 ³ / ₁₆ -12	2.5 (1.13)
20000 (10000)	30560-0017	6 ³ / ₄ (17.15)	4 (10.16)	5 ⁵ / ₈ (14.28)	3 ¹ / ₈ (7.94)	1 ¹ / ₄ (3.18)	1 ¹ / ₂ -12	6.75 (3.06)
50000 (20000)	30561-0016	10 (25.4)	6 ¹ / ₄ (15.87)	7 (17.78)	4 (10.16)	1 ¹ / ₂ (3.81)	2 ¹ / ₄ -12	16.75 (7.60)



MODEL Z COMPRESSION CELLS

Standard with 14-S side mount connector, overload stops, compression ball and base plate.

Capacity lb (kg)	Part No.	A in (cm)	B in (cm)	C in (cm)	D in (cm)	E in (cm)	F in	G in (cm)	H in (cm)	Approx. Gross Wt. lb (kg)
25 (10)	33365-0117	7/8 (2.24)	3 ¹⁵ / ₁₆ (10.00)	3 (7.62)	2 (5.08)	1 ¹ / ₂ (3.81)	3/8 -24	7/16 (1.12)	1/2 (1.27)	3 (1.36)
50 (20)	33365-0125	7/8 (2.24)	3 ¹⁵ / ₁₆ (10.00)	3 (7.62)	2 (5.08)	1 ¹ / ₂ (3.81)	3/8 -24	7/16 (1.12)	1/2 (1.27)	3 (1.36)
100 (45)	33365-0133	7/8 (2.24)	3 ¹⁵ / ₁₆ (10.00)	3 (7.62)	2 (5.08)	1 ¹ / ₂ (3.81)	3/8 -24	7/16 (1.12)	1/2 (1.27)	3 (1.36)
200 (90)	33365-0141	7/8 (2.24)	3 ¹⁵ / ₁₆ (10.00)	3 (7.62)	2 (5.08)	1 ¹ / ₂ (3.81)	3/8 -24	7/16 (1.12)	1/2 (1.27)	3 (1.36)
500 (225)	33365-0166	1 ¹ / ₈ (2.84)	4 ³ / ₁₆ (10.64)	3 ¹ / ₄ (8.26)	2 ¹ / ₂ (6.35)	1 ¹ / ₂ (3.81)	1/2 -20	7/16 (1.12)	1/2 (1.27)	3 (1.36)
1000 (450)	33365-0182	1 ¹ / ₈ (2.84)	4 ¹¹ / ₁₆ (11.91)	3 ³ / ₄ (9.53)	2 ¹ / ₂ (6.35)	1 ¹ / ₂ (3.81)	1/2 -20	7/16 (1.12)	1/2 (1.27)	3 (1.36)

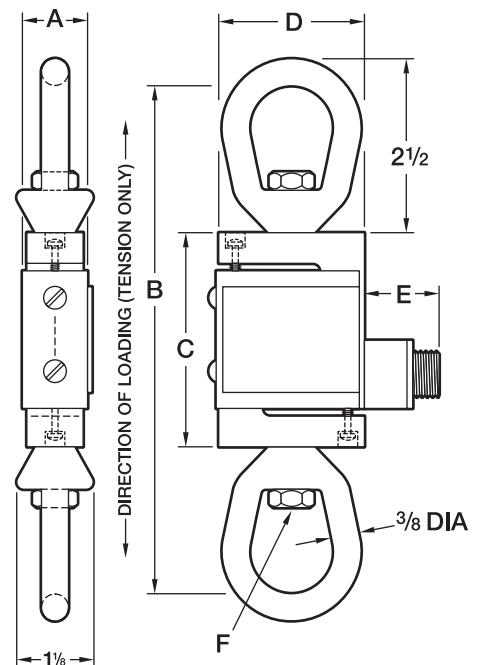


(Three 3/8" non-threaded holes for mounting)

MODEL Z TENSION CELLS

Standard with 14-S side mount connector, eye nuts, and overload stops.

Capacity lb (kg)	Part No.	A in (cm)	B in (cm)	C in (cm)	D in (cm)	E in (cm)	F in	Approx. Gross Wt. lb (kg)
25 (10)	33565-0115	7/8 (2.24)	7 ¹ / ₄ (18.41)	3 (7.62)	2 (5.08)	1 ¹ / ₂ (3.81)	3/8 -24	3 (1.36)
50 (20)	33565-0123	7/8 (2.24)	7 ¹ / ₄ (18.41)	3 (7.62)	2 (5.08)	1 ¹ / ₂ (3.81)	3/8 -24	3 (1.36)
100 (45)	33565-0131	7/8 (2.24)	7 ¹ / ₄ (18.41)	3 (7.62)	2 (5.08)	1 ¹ / ₂ (3.81)	3/8 -24	3 (1.36)
200 (90)	33565-0149	7/8 (2.24)	7 ¹ / ₄ (18.41)	3 (7.62)	2 (5.08)	1 ¹ / ₂ (3.81)	3/8 -24	3 (1.36)
500 (225)	33565-0164	1 ¹ / ₈ (2.84)	7 ¹ / ₂ (19.05)	3 ¹ / ₄ (8.26)	2 ¹ / ₂ (6.35)	1 ¹ / ₂ (3.81)	1/2 -20	3 (1.36)
1000 (450)	33565-0180	1 ¹ / ₈ (2.84)	8 (20.32)	3 ³ / ₄ (9.53)	2 ¹ / ₂ (6.35)	1 ¹ / ₂ (3.81)	1/2 -20	3 (1.36)





ORDERING THE RIGHT LOADCELL IS A SIMPLE PROCESS:

- 1. First determine the capacity you will need.**

For capacities from 0–25 to 1000 lbs. you will need to order a Z Cell (tension or compression).
For jobs requiring capacities from 2,000 to 100,000 lbs., order an SGMC (compression) or an SGMT (tension) cell of the correct capacity.
- 2. Hardware**

Model Z tension cells already include two eye nuts.
Model Z compression cells include base plate and compression ball.
SGMC (compression) cells include base plate and compression cap.
For SGMT (tension) cells, select from the following list the properly sized combination of hardware which best fits your application:

 - Pull plug
 - Yoke and pin
 - Eye nut
 - Swivel hook
 - Bolt type anchor shackles
 - Anti torsion links (consult factory for your application)
- 3. Cable**

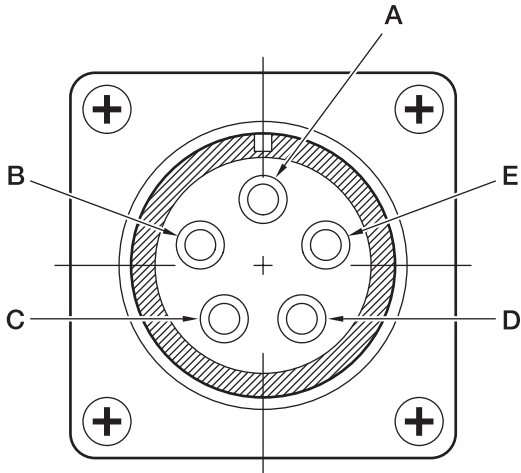
Each Dillon loadcell comes with a 14-S Connector. Cable length and mating connector are determined by the equipment with which the loadcell will interface. All you have to know is the model of indicator, summing box, computer, chart recorder or other data collection device you will be using with the loadcell, and how far away it will be.

One end will attach to the loadcell with a side mount connector.

Select the appropriate fitting for the other end:

 - spade lugs
 - 7-pin connector for use with FI-90, FI-127 and Wizard indicators.

LOADCELL WIRING



Loadcell connector

- A – Output
- B + Excitation
- C + Output
- D – Excitation
- E Shield

SPECIFICATIONS			
Model	SGMT	SGMC	Z
Application	Tension	Compression	Tension or Compression
Rated Output (mv/v) open circuit	2 ±0.2	2 ±0.2	2 ±0.2
Zero balance % full scale	0 to 2	0 to 2	0 to 10
Excitation (DC volts) maximum	15	15	15
Bridge resistance (Ohms) maximum (output)	350 ±0.5%	350 ±0.5%	350 ±0.5%
Typical system accuracy % FI-127, Wizard**	±0.25	±0.25	±0.1
Typical system accuracy % FI-90**	±0.35	±0.35	±0.1
Non-linearity % FS best-fit	±0.4*	±0.4	±0.05
Hysteresis % FS	±0.3*	±0.3	±0.03
Repeatability % FS	±0.1	±0.1	±0.02
Temperature effects Zero % FS/100°F	±2.0	±2.0	±0.1
Output % load/100°F	±2.0	±2.0	±0.2
Temp. Comp Range	15 to 115°F	15 to 115°F	15 to 115°F
Operable Temp. Range	-20 to +200°F	-20 to +200°F	-20 to +200°F
Creep-% FS in 20 min.	0.03	0.03	0.03
Overload without zero shift-% FS	300	300	300

*With pull plugs

**Typical applications consist of 3 point (FI-90) or 10 point (FI-127, Wizard) linearization of loadcell. Load is viewed in loading direction with no torsional or off-axis loads applied. Temperature does not deviate greater than ±5°F from room temperature.

Atimann Tel: 0212-243 77 34
ELEKTRONİK LTD. ŞTİ. Fax: 0212-243 77 35
www.atimann.com
DILLON Türkiye Distribütörü



Dillon

A division of Weigh-Tronix Inc
1000 Armstrong Dr
Fairmont, MN 56031-1000, USA
Telephone +1 507-238-4461
Facsimile +1 507-238-8258
e-mail: dillon@weigh-tronix.com
www.dillon-force.com

DILLON

Force Measurement Products & Systems